



# *The Soo Chimes*

## *First United Presbyterian Church*



February 2022

Volume 53 Issue 2

## **Pastor's Message**

Eph 1:2-8) "Grace and peace to you from God our Father and the Lord Jesus Christ. {3} Praise be to the God and Father of our Lord Jesus Christ, who has blessed us in the heavenly realms with every spiritual blessing in Christ. {4} For he chose us in him before the creation of the world to be holy and blameless in his sight. In love {5} he predestined us to be adopted as his sons through Jesus Christ, in accordance with his pleasure and will - {6} to the praise of his glorious grace, which he has freely given us in the One he loves. {7} In him we have redemption through his blood, the forgiveness of sins, in accordance with the riches of God's grace {8} that he lavished on us with all wisdom and understanding."

In January of 2021 we were still not back to "normal". Our Christmas Eve service of 2020 was held on Sunday Morning Dec. 20<sup>th</sup>. Why? We were one of the few denominational churches open and we were worried if we had a Christmas Eve service we might not only have too many people but too many people from other areas. Before the pandemic, can you imagine such a thing being thought, let alone spoken and acted upon? We were sure, as we were not having more than 50

on a Sunday, we wouldn't have too many on the Sunday morning Christmas Eve Service. In December of 2020 we also had no cantata or children's program.

Even some services in 2021 were canceled. Due to social distancing concerns as well as other pandemic concerns both Ash Wednesday and Maundy Thursday were canceled. Slowly and deliberately we started to get back to normal. We had a confirmation class and celebrated them joining us into membership in the church. Groups that had stopped meeting started meeting again in 2021, joining those that had already restarted toward the end of 2020. By the end of the year we had a Children's Program and a Cantata Sunday, each having over 100 people in attendance. Our Christmas Eve service which I missed due to illness, Brenda was able to officiate, it too had over 100 people.

We have been richly blessed by God this year. It has also been a difficult year. Injury, accident and death have at times made 2021 a bitter experience. There

*(Continued on page 4)*

### **Regular Features:**

Prayer Requests	2
Birthdays	3
Anniversaries	3
Bible Study	7
Kid's Page	8
Calendar	9

### **Inside this Issue:**

- Winter Clothing Drive
- Textile Social Group
- Care Net News
- Trustee's Notes
- Thank You
- February Mission
- Circle 3 Meeting
- PW Valentine Meeting

**The Purpose of the First United Presbyterian Church is to:**  
***Invite people to know and glorify God***  
***Grow together as followers of Christ***  
***Serve others through the power of the Holy Spirit***

***Newsletters are sent by email unless you have made other arrangements.***



Deacon's Meeting  
February 13th



Family of Lorne Sheppard, Tom Woodgate, Andrea Klier,  
Family of Calvin Lavender (Dee Musgrave), Gina Gough,  
Family of Jane Rioux (Nathan's Grandmother),  
Jennifer Veum, Kimberly (Swick) Jewell, John Burgess,  
Joyce Cross, Sandy Shaw, Jeffrey Burgess,  
Carolyn Shaw, Jane Kellan, Della Porter, Shelby Myers, Donna LaPlaunt,  
Matilynn Strange, William Kellan, Lillian Donelson, Dave & Leslie  
Henderson, Patricia Farnhill, Geraldine Carnahan, Tara Jean Brody,  
Wendy (Menard) James and all members of missionaries and  
the U.S. Armed Forces.

Please keep us up to date on your prayer requests.

Food Pantry



Shopping & Bagging:  
Doris Boogerd

Food Distribution:  
2/8 –Cathy & Patty  
2/22 - Jeanne& Patty



**Coat Drive**

Help someone in need

### DEACONS' WINTER CLOTHING DRIVE

The Deacons will be collecting winter clothing throughout the month of February to distribute to those in need. If you have new or gently-used winter coats, hats, gloves, mittens, boots, or sweaters that you are willing to donate, please bring them to the church office. Clothing collected will be offered to those participating in Food Pantry or anyone in need.



### **Freighter View Assisted Living** **605 West Portage Avenue**

Audrey Bush  
Elva Hutzler  
Vera Steffens

### **McKinley Manor** **2023 West 4th Avenue**

Ardith Bawks  
John and Barb Kenn  
Peg Zenda

### **Out of Town**

Della Porter  
Cross Roads Village  
6600 Constitution Blvd Room 605  
Portage, MI 49024

### **At Home**

Mary Jane Bernier

### **Medi-Lodge**

**1011 Meridian**

Jane Kellan

### **Long Term Care**

**500 Osborn Blvd**  
Marion Osborn



In memory of ...

Calvin Lavender  
12/27/21

Jane Rioux  
01/12/22

Lorne Sheppard  
01/24/22





MONEY, Margaret	02/01	KENN, Barbara	02/10
JOBES, Jan	02/02	KUENZER, Sascha	02/10
REATTOIR, Daniel	02/02	ROBBINS, Bill	02/11
BLAIR, Donna	02/03	LUSSIER, Cole	02/14
OSBORN, Marion	02/05	DALSKY, Patricia	02/16
ROE, Jordyn	02/05	BOOGERD, Doris	02/17
RATH, Judith	02/09	BERNIER, Andrew	02/20
CAMPBELL, Trudy	02/10	ABBOTT, Andrea	02/21
		HILL, Joan	02/23
		EAGLE, Margaret	02/24
		SHEPPARD, Sharon	02/24
		LORI, Alyvia	02/25
		TASTOR, Jackie	02/27

*Need a  
Ride to Church?*



Cathy, Jeanne,  
Cheryl & Wanda



Communion  
February 13th



CROSS, Ronald & Joyce 02/04  
LEHMAN, Gary & Pat 02/25



# Puzzle!

Match each clue with the correct biblical dreamer.  
Use the Scripture hints if needed.

- \_\_\_ 1. This person's brothers were irritated to hear of certain dreams.
- \_\_\_ 2. Angels went up and down a ladder in this person's dreams.
- \_\_\_ 3. This person dreamed about skinny cows eating fat cows.
- \_\_\_ 4. After an unpleasant dream, this person warned a loved one to avoid Jesus.
- \_\_\_ 5. This person saw a statue whose feet were smashed by a stone.
- \_\_\_ 6. A dream warned this person (plus family) to flee to Egypt.
- \_\_\_ 7. This person saw a vine produce grapes, with juice squeezed into a cup.
- \_\_\_ 8. A dream warned about Herod's evil plan.


- A. Pharaoh (Genesis 41:17-21)
- B. The Magi (Matthew 2:12)
- C. Jacob (Genesis 28:12)
- D. Pharaoh's cupbearer (Genesis 40:9-11)
- E. NT Joseph (Matthew 2:13)
- F. OT Joseph (Genesis 37:9, 11)
- G. Pilate's wife (Matthew 27:19)
- H. Daniel (Daniel 2:31-35)

Answers: 1. F, 2. C, 3. A, 4. G, 5. H, 6. E, 7. D, 8. B



Textile made and delivered tote bags with fleece blankets to WMH Dialysis Unit!

Pictured are Doris, Leitha, Sara, Margaret and Anita




*Installation  
of  
Officers*

*Sunday*

*February 13th*

*After the  
Worship Service*



**COFFEE  
and  
Cookies**

were times we, like Job, could simply say, "God we know you can do all things and we know that nothing you purpose can be thwarted". Yet, as we look back God has been faithful to us as a congregation and a people and indeed blessed us. As the Psalmists says, "God has been our refuge and strength". May God continue to bless us in 2022.

Peace in Christ,  
Mark

**Congratulations**

*Blessings*



*on your 55th  
Anniversary!*

**Gary & Pat Lehman**

**CARE NET**  
Pregnancy Center of the EUP



**February  
15th!!!**

On January 19th we were able and blessed to totally pay off our mortgage! Thank you so much to all of you who prayed or gave to help us attain this monumental accomplishment. Please continue to pray as we consider our facility needs.

Care Net Board and Staff



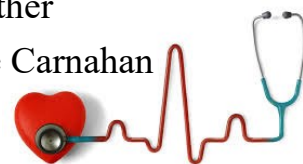
**Congratulations**

To Tyler Wall

Has earned doctorate in the  
field of Medicine

Grandmother

Geraldine Carnahan



Charmaine, Jackie, Mike, Sandy, Glenn, Margaret, Ann, Leanne, Laura, and Jen wish you a blessed 2022!  
Your FUPC Board of Trustees enjoying an evening of fellowship at the Deuman's beautiful Lake Superior cottage



Thank you for a wonderful year, the gifts of each individual is what makes all we do possible. We are grateful for the time, energy, monetary support, prayers, donations to missions, beautiful voices, children's education, musical talent, and thoughtfulness each of you provide.

As we move into 2022, we want to take a moment to remind each of our members about the per capita offering. If you receive a box of offering envelopes, it's the blue-colored one. If you normally process offerings online, you can reach out to Denise in the office and she can provide you with the "special envelopes." Per capita is \$38 yearly and supports the larger Presbyterian Church (U.S.A.), it's the glue that holds us all together. Please feel free to reach out to one of the smiling faces above if you have any questions.

Peace be with you,  
Your Trustees



### **"A Thank You—A Big Thank You"**

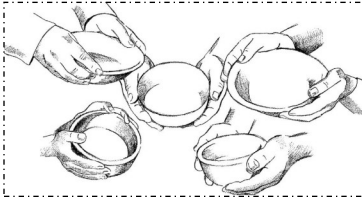
For all the love and support you all gave us in the loss of my daughter, Nancy and brother, Gary.

To Pastor Mark for his wonderful words and loving care.  
For the music done by our very own choir and Kay Lawrence.

Thanks for so many beautiful cards, gifts, flowers, and love.

Also for the luncheon for our family and friends.

*With lots of love—Leitha & families*



### **BAZAAR ITEMS**

For those who brought in rose bowls for our recent bazaar and would like them back please contact Cheryl at 906-632-7300. Thanks so much for their use!!



## **February Mission Project**

The mission focus for February will continue to be monetary donations to aid those who struggle with home heating expenses

during these cold winter months. The funds we collect will be given to Community Action Agency for the purpose of helping people in our area stay warm as no one wants to see others living in cold conditions. Any amount whether large or small is greatly appreciated as together we can make a difference in other people's lives.

Please note that a container is at the back of the church each Sunday for your donations. And a reminder that checks can be made out to CLM Community Action Agency or just CLMCAA and write "Walk for Warmth" on the memo line.

### **Mark your Calendar Now -**

PW will combine our February Meeting with a Valentine Potluck Luncheon on February 15th at 12 Noon. Come, bring a dish to pass and join in the fellowship.

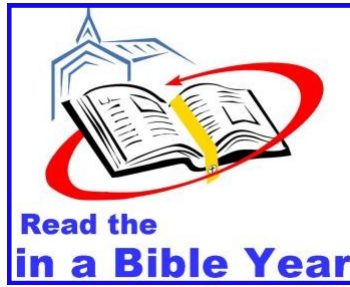
Immediately following the luncheon we will have our planning meeting for the year's activities - Church Cleaning Project, Rummage Sale, Bazaar, Get Togethers with other Presbyterian Woman's Groups in the area, mission projects, etc.

All women of the church are Presbyterian Women!!

Let's make this a great start for a new year of mission work, fellowship and fun. If you are working maybe you can schedule your lunch break to join us. If you can't stay for the meeting, we certainly understand but please jot down some of your thoughts for PW to consider.

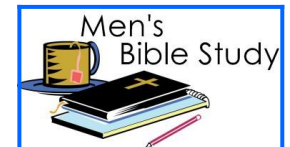


# February



*Alegra Soorus  
&  
Cheryl Thoresen*

1	Luke 23:1-25	Genesis 41	Psalm 32
2	Luke 23:26-56	Genesis 42	Psalm 33
3	Luke 24:1-12	Genesis 43	Psalm 34
4	Luke 24:13-53	Genesis 44	Psalm 35
5	Hebrews 1	Genesis 45:1-46:27	Psalm 36
6	Hebrews 2	Genesis 46:28-47:31	Psalm 37
7	Hebrews 3:1-4:13	Genesis 48	Psalm 38
8	Hebrews 4:14-6:12	Genesis 49-50	Psalm 39
9	Hebrews 6:13-20	Exodus 1-2	Psalm 40
10	Hebrews 7	Exodus 3-4	Psalm 41
11	Hebrews 8	Exodus 5:1-6:27	Proverbs 1
12	Hebrews 9:1-22	Exodus 6:28-8:32	Proverbs 2
13	Hebrews 9:23-10:18	Exodus 9-10	Proverbs 3
14	Hebrews 10:19-39	Exodus 11-12	Proverbs 4
15	Hebrews 11:1-22	Exodus 13-14	Proverbs 5
16	Hebrews 11:23-40	Exodus 15	Proverbs 6:1-7:5
17	Hebrews 12	Exodus 16-17	Proverbs 7:6-27
18	Hebrews 13	Exodus 18-19	Proverbs 8
19	Matthew 1	Exodus 20-21	Proverbs 9
20	Matthew 2	Exodus 22-23	Proverbs 10
21	Matthew 3	Exodus 24	Proverbs 11
22	Matthew 4	Exodus 25-27	Proverbs 12
23	Matthew 5:1-20	Exodus 28-29	Proverbs 13
24	Matthew 5:21-48	Exodus 30-32	Proverbs 14
25	Matthew 6:1-18	Exodus 33-34	Proverbs 15
26	Matthew 6:19-34	Exodus 35-36	Proverbs 16
27	Matthew 7	Exodus 37-38	Proverbs 17
28	Matthew 8:1-13	Exodus 39-40	Proverbs 18



The study group meets  
every Friday morning  
at 9:00 am.



**Cheryl Thoresen**



*Women's  
Bible Study*

The study group meets  
every Wednesday  
morning at 9:30 am.  
All women are welcome  
to attend



# Golden GIVING

Live out Jesus' golden rule by preparing gift bags for people in need.



## What you need:

- Gallon-size zip bags
- New socks
- Hand warmers
- Bus fare or tokens
- Bottled water
- Nonperishable food
- Toiletries and first-aid items
- Paper and markers

## What you do:

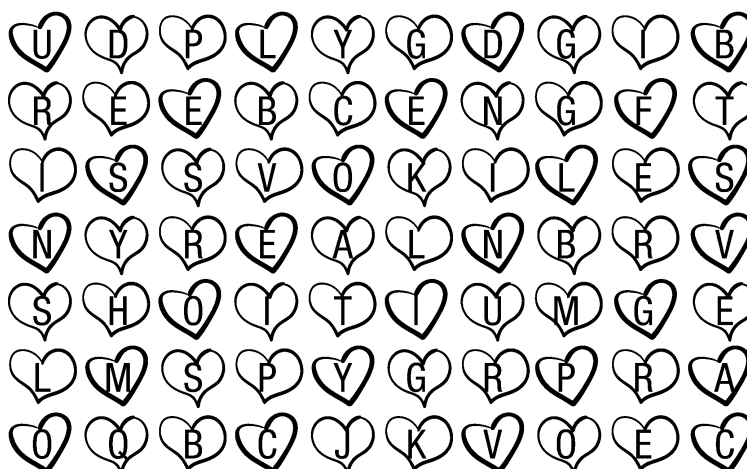
1. Gather supplies, using the ideas above. Fill bags to make care packages.
2. Write notes or draw pictures for recipients, placing one in each bag.
3. Zip bags and keep them in a vehicle to distribute. Or deliver them right away to people in need (or to sick or homebound people, nursing home residents, a homeless shelter and so on).
4. Pray that God will use your gifts to help and encourage each recipient.



# The heart of a friend

Big-hearted friendliness comes from generously serving others.

*Directions: Start with the first D and move according to the arrows beneath the blanks. Then fill in the letters to complete 1 Peter 4:8-10.*






Above all, love each other D ↓ → ↑ → →, because love  
↓ ↓ ← ↓ ← ↑ over a multitude of ← ← ↓ ↓. Offer  
→ → ↓ → ↑ → ↑ → ↓ ← ↓ to one another without  
→ → ↑ → ↑ ← ↑ →. Each of you should use whatever  
↑ → ↓ → you have received to ↓ ← ↓ → ↓ others, as faithful  
stewards of God's ← ↓ → ↓ ← in its various forms.

1 PETER 4:8-10, NIV

Answer: deeply, covers, sins, hospitality, grumbling, gift, serve, grace



Sunday	Monday	Tuesday	Wednesday	Thursday	Friday	Saturday
<div>  </div>		1	2 <b>Ground Hog Day</b> 9:30a Women's Bible Study 6:00p Choir Rehearsal	3 10:00a Textile Social (SH)	4 9:00a Men's Study Grp	5 9:00a NA 7:00p AA
6 9:00a Early Social Hour (WR) 9:15a Choir Rehearsal 10:00a Worship Service 10:00a Sunday School	7 7:00p Boy Scout Meeting	8 3:30p Food Pantry	9 6:00p Choir Rehearsal	10 9:30a Circle 3 Meeting	11 9:00a Men's Study Grp	12 9:00a NA 7:00p AA
13 9:00a Early Social Hour (WR) 9:15a Choir Rehearsal 10:00a Worship Service 10:00a Sunday School 11:15a Deacon's Meeting (Lib)	14 <b>Valentine's day</b> 7:00p Boy Scout Meeting  <i>Happy Valentine's Day</i> 	15 9:30a Ladies Coffee Hour (Potluck)	16 9:30a Women's Bible Study 6:00p Choir Rehearsal	17 10:00a Textile Social (SH)	18 9:00a Men's Study Grp	19 9:00a NA 7:00p AA
20 9:00a Early Social Hour (WR) 9:15a Choir Rehearsal 10:00a Worship Service 10:00a Sunday School	21 <b>President's Day</b> 5:30p Session Meeting 5:30p Trustee Meeting 7:00p Boy Scout Meeting 	22 3:30p Food Pantry	23 9:30a Women's Bible Study 6:00p Choir Rehearsal	24 10:00a Textile Social (SH)	25 9:00a Men's Study Grp	26 9:00a NA 7:00p AA
27 9:00a Early Social Hour (WR) 9:15a Choir Rehearsal 10:00a Worship Service 10:00a Sunday School	28 7:00p Boy Scout Meeting					

**First United Presbyterian  
Church**

555 Bingham Avenue  
Sault Ste. Marie, MI 49783



906-632-7771  
Fax: 906-632-4666  
office@soopresbyterian.org  
soopresbyterian.org

Office Hours: 8:00 a.m. to 2:30 p.m.  
Monday through Friday  
(closed 11:30-12)

**Sunday Worship Schedule**  
Worship Service 10:00 a.m.  
Sunday School (all grades) 10:00 a.m.

**Church Staff**

Rev. Mark Gabbard, Minister  
Brenda Ransom, CRE  
Kay Boyne, Music Director  
Denise Goldade, Financial/Administrative Assistant  
Jeremy Witte, Sexton

**Deadline for March issue:  
February 15th**

