



The Soo Chimes

First United Presbyterian Church



May 2016

Volume 47 Issue 5

PASTOR'S MESSAGE

The Presbyterian Church has always been a connectional church. A church does not stand on its own, but is bound to the other Presbyterian congregations in its area which is called a Presbytery. In our case this would be the Presbytery of Mackinac. Regional presbyteries are joined together in a synod, in our case the Synod of the Covenant. Finally there is the General Assembly of the Presbyterian Church (USA). One of the reasons we are a connectional church is our founder John Calvin (1509-1564) was leery about ecclesiastical power being vested in a small number of people or person. Calvin set forth a polity where there was a checks and balances system with the church. The local congregation was setup so power was shared between the pastor and the elected representatives of the congregation in the form of "session". Session with the input of both the pastor and the congregational elected leaders would be the board to govern the local congregation. The congregation could also elect Deacons and Trustees to

server on boards with a specific purpose, but always with the proviso that these boards were under the guidance of session.

But what if session acts against the church constitution? Calvin anticipated this possibility. The Presbytery to which the church belongs in "extreme" cases can actually remove the session. Obviously, the Presbytery's first steps would be to try to reason with the session that has acted against the constitution. In many presbyteries such an extreme action as removing a session has never been taken. The provision is there, though, in case such dire circumstances are necessary. There are similar provisions to hold presbyteries and synods accountable if their actions are deemed unconstitutional.

That is the bad stuff, though. The other reason we are a connectional church is to accomplish things together we could not accomplish on our own. It allows missions and programs to exist

(Continued on page 2)

Regular Features:

Prayer Requests	3
Birthdays	4
Anniversaries	4
Bible Study	7
Kid's Page	10
Calendar	11

Inside this Issue:

- Deacon's Bench
- High Youth Group
- "Promises" by Don Myers
- Spring Work Camp
- Presbytery Point Camp
- Sugar Island Cabin
- Quilt Raffle
- Recognition Sunday
- VBS

The Purpose of the First United Presbyterian Church is to:
Invite people to know and glorify God
Grow together as followers of Christ
Serve others through the power of the Holy Spirit

Receive your newsletter by email and in color, too. Call the office to find out how!

that one church could not possibly manage such as; spreading the Gospel, feeding the hungry, economic development, etc. Ecclesiastes 4:12 teaches us, "Though one may be overpowered, two can defend themselves. A cord of three strands is not quickly broken." We are stronger together. A connectional church is like a family. We don't always agree in a family, but we know we are stronger when we stick together. Today larger governing bodies and larger institutions have fallen out of favor and receive a lot of criticism. Sometimes the criticism is just. Let us not throw the baby out with the bathwater, though, we are stronger together.

Peace in Christ,
Mark

Deacon

Jeanne
Shibley



If you or someone you know are in the hospital and would like a visit from the Deacon's please contact the church office or one of the Deacons



Deacon's
Corner

The next Deacon's Meeting will be held on May 15th.



Food Pantry
Ruth Wilson
and
Ginger Stratton



Michelle Markstrom



HOMEBOUND
MEMBERS

Freighter View Assisted Living
605 West Portage Avenue

Virginia Blair
Audrey Bush
Emily Hamilton
Margaret Olson
Delores Swick

Tendercare— Sault Ste Marie

1011 Meridian
Jim Schmidt
Jean Smith

McKinley Manor

2023 West 4th Avenue

Jeanne Gantz
Jane Kellan
Dorothy Smart
Vera Steffens

Hearthside Assisted Living

1501 W 6th Avenue

David Shaw

WMH Long Term Care

500 Osborn Boulevard

Lois Myers

Out of Town

Della Porter

2920 Crystal Lane Room 426
Kalamazoo, MI 49009

Dorthea Allen

Michigan Masonic Home

1200 Wright, Room 167

Alma, MI 48801

June MacInnis

900 Glen Haven Circle, Apt 2

Petoskey, MI 49770



Prayer Requests

Family of Carl Smart, Verna Campbell, John White,
 Family of Barbara Harris, Marion Osborn,
 Diane McMeeken, Shane Miller, Kevin Tastor,
 Gina Gough, Dorothy Smart, Jim Schmidt,
 Delphine Porter, Jean Smith, Jane Kellan, Kady Love, Ruth Thesing,
 Wendy (Menard) James, Judy Knutsen, Margaret Olson,
 Ellen Woodgate, William Kellan, Margaret Vonderwerth & her family,
 and all members of missionaries and the U.S. Armed Forces.

Please keep us up to date on your prayer requests.



SUNDAY
MAY 15TH
2:00 PM
 Michelle Markstrom



Welcome to Our Church

**Our Sunday
 Worship
 Service
 starts at 10:00 a.m.**

We hope to see you



*The Church
 Office will be
 closed*

May 30th



In memory of ...

Barbara Harris
 04/03/16
 Carl Smart
 4/10/16



Before our Lord Jesus ascended into heaven, he gave Peter a chance to redeem himself for denying Jesus three times prior to the crucifixion. Three times he asked Peter, "Do you love me?" to which Peter replied, "Yes, I love you." Jesus then told Peter to feed his lambs, then to take care of his sheep, and lastly to feed his sheep. [John 21:15-17].

As a church, we take care of Jesus' sheep spiritually and physically. The disciples were empowered by the Holy Spirit to be able to take care of Jesus' sheep. Pentecost, the day when the Holy Spirit was received and considered the birthday of the Christian church, is coming on May 15th. Help us celebrate with a Candle for Christ to help us feed his sheep.

A "birthday candle" can be purchased for a donation in the church office. They will also be available in the Narthex or from one of the deacons. The amount of the donation is entirely up to you. You may wish to write the name of a special Christian in your faith journey on the sheep's face. The birthday candles will be posted so we can see the "cloud of witnesses" who have helped us in our journeys. All proceeds will be used to continue the food pantry through the summer months.

Another opportunity will be to place an offering in the specially marked envelopes for the Food Pantry in the pews.

Help us to help our community as Christ has commanded.
 Jeanne Shibley





Gordon and Carol Rohweder 05/07
 Tom and Ellen Woodgate 05/10
 Fred and Sue Michels 05/23
 John and Jeanne Shibley 05/24
 Henry and Jaymie Guzzo 05/26
 Donald and Marilyn Myers 05/26



Pastor Mark will be taking some much deserved time off from May 9th through May 20th. We are grateful for the care he gives our church family and pray he has a fun and restful vacation! During his absence, please join us, Sunday, May 15th as we welcome Brenda Ransom, CRE as our guest speaker.

Congratulations
 CELEBRATING AN
 Anniversary 60 Years
 Don & Marilyn Myers



May 3, 2016



High School Youth Group

Congratulations
 50 Golden Anniversary
 Gordon & Carol Rohweder

May 8 and May 22 regular meeting 6:30 pm
 We encourage students grades 9-12 to attend and bring friends.
 Please continues prayers as we reach out to the youth and bring them God's word.
 ~Mark and Melissa Gabbard, Chad and Denise Folkersma



Jaimee Gerrie	05/02	Joanne Noble	05/05	Kristeen Mason	05/16
Janet Sarnowski	05/02	Elizabeth Martin	05/06	Mary S. Nelson	05/17
Ralph Kokko	05/03	Olivia Martin	05/06	Mary Stanaway	05/17
Phyllis McKechnie	05/03	Sue Kaunisto	05/07	Glenn Trumble	05/21
Parker Rutledge	05/04	Angela McKee	05/09	Ethan Hill	05/24
Colton Schmidt	05/04	Dorothea Allen	05/11	Anne Capling	05/25
		Margaret Olson	05/11	Renee Lawrence	05/25
		Meta Geyer	05/13	Charles Zane	05/25
		John Jobes	05/13	David Bernier	05/26
		Tammy Rutledge	05/14	Darla Krueger	05/29
		Carla Grenier	05/15	Ronald Cross	05/30
		Mary E. Robertson	05/15	Emma Folkersma	05/31

Promises



In May of this year my wife and I will be celebrating 60 years of married life. Yes we are both beyond the bloom of youth even though we don't feel the years like many elderly couples. We even think we don't look as old as we are. We are probably kidding ourselves.

We were married in 1956. I was 21 and Marilyn was 20. We attended college at the University of Tulsa, a Presbyterian affiliated university. On my class ring it states, "For wisdom, faith and service, for Christ and the state."

Baseball was good to me as I attended TU on a baseball scholarship and Marilyn was seeking a degree in Home Economics. It wasn't until 1980 that Marilyn completed her education at Mercy College in Detroit with a change in her major to Gerontology from Home Economics.

Both Marilyn and I were the first in our family graduate from College. Today two of our four children hold degrees, our oldest son and youngest daughter.

One of our daughters has a teenager who is planning on attending LSSU and play softball. Only six universities in this country offer softball and forensic chemistry, so this is where she will come next September.

I have wandered around with writing this letter and have gotten away from my title of "Promises." but Marilyn and I promised to be together until the end, and life is sneaking up on us. We both have shared physical setbacks but nothing has kept us from "going on." We don't know how long we can continue but her folks lived to be 89 and 95, and my dad died at 75, but my Mother lived to be 89, so we have some longevity on each side of the family.

We made a promise to one another a long time ago to be devoted to one another. We have walked hand in hand and we have gone separate ways but we knew that God would always be our judge. God keeps track of each and every one of us, and we have to realize he is in control, through Jesus Christ our Lord and Savior.

We didn't always trust God in everything we undertook in life but we have learned to be quiet at the right times and enjoy life to the fullest. We always will, since we have been given gifts that on our journey of acceptance and joy.

Don Myers, CRE



Soup n'
Sandwich

**Soup N' Sandwich
& Soup Kitchen**

**May 1st
Trustees**



A Pasta and Meatball Supper

will be held at **Central United Church**

160 Spring St., Sault Ste. Marie, ON

on Wednesday, May 11 from 4:30 – 6:30.

Tickets are \$10.00 for adults, \$5.00 for children 5-12 or \$22.00 per family and are member's of the men's club or at the door.



Spring Work Camp at Presbytery Point Camp is May 6 – 13, 2016

Help to open the camp, work on building projects, tend the grounds, and tackle spring cleaning tasks in the fellowship of others who share a love for our Presbytery's outdoor camping ministry. Couples, families, singles, retirees, mission groups, all ages – join us for a day or two, or for the whole week! Registration forms and information are available by calling the camp at 906-869-0925 or sending an email to ppccc@presbyterypoint.org.



Summer's coming soon, so it's time to start thinking about Presbytery Point Camp. Get registration forms at the church office or go to the Camp website:

presbyterypoint.org

Camp sponsorships are available again this year; call the church office for more information.

Got Spirit? Get it here!

May For more information, check the website at www.presbyterypoint.org, email questions to ppccc@presbyterypoint.org, or call The Point at 906-869-0925.

Sign up before May 15th and get a free t-shirt



Don't forget to get your reservations in for the FUPC cottage on Sugar Island. It's a beautiful place with all the comforts of home and a wonderful view. It's never too early to think about a relaxing vacation at the shore. Contact Denise for available dates and rates.



Sunday, May 15th



A shepherd's role

While traveling in Iran, writer Eric Bishop asked a villager about an earthen enclosure topped with dry thorns. The man said sheep stayed in the round space at night for safety. "What are the thorns for?" Bishop asked. "If a wolf tries to break in and attack the sheep," the man replied, "he'll knock against the thorns, and they'll make a noise, and the shepherd will wake up and drive off the wolf."

Pointing out the enclosure's doorless entrance, Bishop asked why a wolf wouldn't just enter there. Because, replied the villager, "that's where the shepherd sleeps; the shepherd is the door."

Suddenly Bishop understood why in John 10 Jesus calls himself first the door, or gate, for the sheep and then the Good Shepherd. Because Jesus is the shepherd, he's also the door that keeps us, his sheep, safe within his care.



Sunday, May 22nd



Bible Quiz

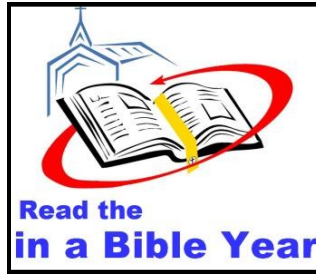
Which books of the Bible include an account of Jesus' ascension?

- A. Luke and Acts
- B. Matthew and Luke
- C. Mark and John
- D. All four gospels and Acts 1:9.)

Answer: A (See Luke 24:51)



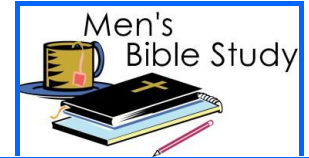
May



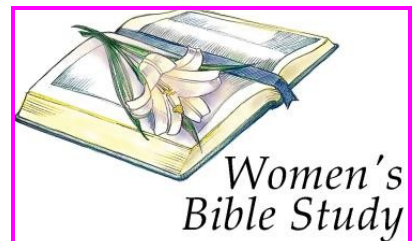
1	Acts 14	Joshua 22	Job 31
2	Acts 15:1-21	Joshua 23-24	Job 32
3	Acts 15:22-41	Judges 1	Job 33
4	Acts 16:1-15	Judges 2-3	Job 34
5	Acts 16:16-40	Judges 4-5	Job 35
6	Acts 17:1-15	Judges 6	Job 36
7	Acts 17:16-34	Judges 7-8	Job 37
8	Acts 18	Judges 9	Job 38
9	Acts 19:1-20	Judges 10:1-11:33	Job 39
10	Acts 19:21-41	Judges 11:34-12:15	Job 40
11	Acts 20:1-16	Judges 13	Job 41
12	Acts 20:17-38	Judges 14-15	Job 42
13	Acts 21:1-36	Judges 16	Psalm 42
14	Acts 21:37-22:29	Judges 17-18	Psalm 43
15	Acts 22:30-23:22	Judges 19	Psalm 44
16	Acts 23:23-24:9	Judges 20	Psalm 45
17	Acts 24:10-27	Judges 21	Psalm 46
18	Acts 25	Ruth 1-2	Psalm 47
19	Acts 26:1-18	Ruth 3-4	Psalm 48
20	Acts 26:19-32	1 Samuel 1:1-2:10	Psalm 49
21	Acts 27:1-12	1 Samuel 2:11-36	Psalm 50
22	Acts 27:13-44	1 Samuel 3	Psalm 51
23	Acts 28:1-16	1 Samuel 4-5	Psalm 52
24	Acts 28:17-31	1 Samuel 6-7	Psalm 53
25	Romans 1:1-15	1 Samuel 8	Psalm 54
26	Romans 1:16-32	1 Samuel 9:1-10:16	Psalm 55
27	Romans 2:1-3:8	1 Samuel 10:17-11:15	Psalm 56
28	Romans 3:9-31	1 Samuel 12	Psalm 57
29	Romans 4	1 Samuel 13	Psalm 58
30	Romans 5	1 Samuel 14	Psalm 59
31	Romans 6	1 Samuel 15	Psalm 60



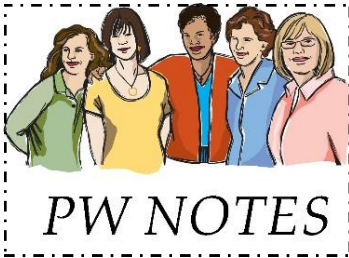
Dave Pearce
and
Jeanne Shibley



Men's Bible Study every Friday morning at 9:00 am.
All men are welcome to join us!



Woman's Bible Study every Wednesday morning at 9:30 am
All women of the church are invited to join us.



**Tuesday at 9:30 am
May 17th
(the 3rd Tuesday),**
All ladies are welcome to join us for an informal gathering.

Circle 3 Meeting
Thursday, May 12th



RUMMAGE SALE

Thank you to everyone who helped with the Rummage Sale, to our church family who donated items, to the workers who spent many hours preparing for and working the sale, to Gary Deuman for picking up items and bring them to the church, to Lou and Anita Weinrick, and Tina Kay for taking our left over items to the Salvation Army, and to the Boy Scouts for set up and cleanup. Thanks to everyone's efforts our sale was a great success. We raised over \$1,000.00 for our mission projects. We could not have done this without your support.

Thank you again. PW



Quilt Raffle
This year the PW will be raffling another beautiful hand made king size quilt by **Sandy Shaw.**

Tickets are available .
The drawing will be held
November 5, 2016 at 4:00 pm.



Soo Theatre 2016 Season

Has begun! May 8th at 4:00 pm

“Festival Orchestra Concert”

Admission by Donation

See bulletin board for complete schedule.

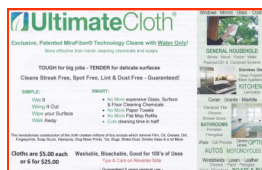


Year-to 4/24/16 offerings \$57,607
Year to 4/24/16 expenses \$58,620



Dish Cloths!
Colors to match every kitchen
Only \$1.00 each
Available in the church office.

Brought to you by the
Presbyterian Women



**The Ultimate Cloth Great for your
Cleaning projects!**
Get yours at the church office
\$6.00 each or 5 for \$25.00



ATTENTION GRADUATING SENIORS AND THEIR FAMILIES

Graduation season is upon us once again and the Christian Education Committee would like to honor its graduating seniors on May 29, 2016 during worship. If you have a graduate in your family and would like them recognized that day, please provide a photo of your graduate and a brief write up about them. You can drop off the information to the church office or email it to office@soopresbyterian.org. All information is needed by Monday, May 16.



For questions contact Kaye Hillock-Vining at 906-630-5346 or the church office.

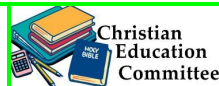


Come and celebrate the accomplishments of God's children on Sunday, May 29th at 10 am. We will be honoring our graduates and sharing in the growth of our Sunday School Children. There will be a reception following the service for all to enjoy!

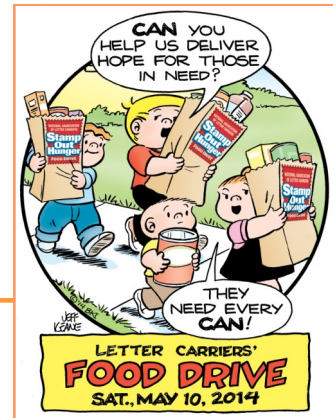


Thursday, May 5th is National Day of Prayer across the United States.

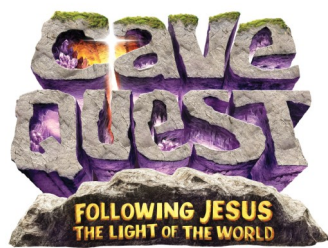
Focus Group on Medicaid Benefits
May 2, 2016 at 1:00 pm
Lake Superior State University
More Information:
Call 1-800-257-1314 (press 2)
Or Email or text:
DECIDERSproject@umich.edu



Coffee & Cookies
May 29, 2016
Recognition Sunday
Christian Education



The Annual Letter Carriers' Food Drive will be held on Saturday, May 14. Put your non-perishable donations in a bag by your mailbox and your letter carrier will pick it up. All items collected will be donated to the Food Bank and local food pantries, including our FUPC Food Pantry. Please give generously to help feed our neighbors in need!

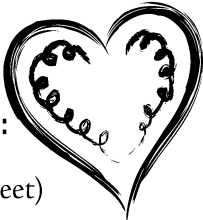


VBS NEEDS YOU!!!!
Volunteer Signup Sheet
on Bulletin Board or
contact the church office at 632-7771 or
email us at office@soopresbyterian.org
June 20—June 24 9 am—12:30 pm



A heartfelt felt heart

On Mother's Day, express your love for your mom or another special woman by giving her this gift from the heart.



What you need:

- Red felt (8" x 11" sheet)
- Dark pen
- Fabric scissors
- Pillow stuffing
- Straight pins
- Embroidery thread (pink, red or black)
- Needle
- An adult to help

What you do:

1. Fold the felt in half and draw a heart on it. Cut out the heart so you have two of the same size.
2. Place the hearts on top of each other, add stuffing and pin the hearts together.
3. Thread the needle with a long piece of thread. Knot the end.
4. Sew the hearts together. Knot the thread and trim the ends. Remove pins.
5. Give the gift – and a hug!

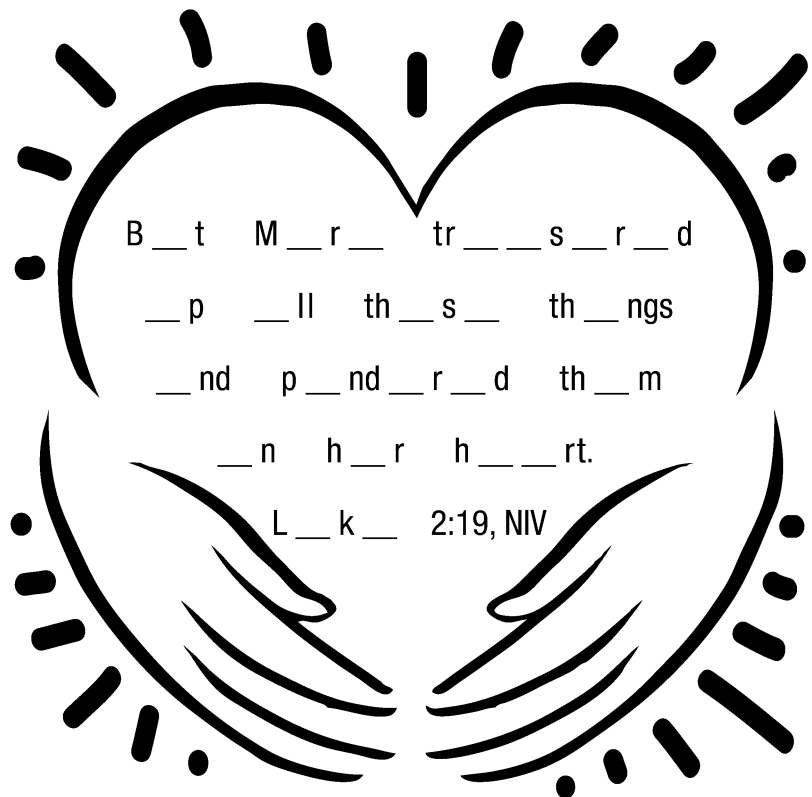


A mother's love

At age 12, Jesus was left behind in Jerusalem. His parents later found him in the temple, discussing Scripture. What did Mary, Jesus' mother, think about this?

Directions: Fill in the blanks with the correct vowels to complete the Bible verse.

A E I O U Y



Answer: But Mary treasured up all these things and pondered them in her heart. Luke 2:19, NIV

Sunday	Monday	Tuesday	Wednesday	Thursday	Friday	Saturday	
1 9:00a Early Social Hour 9:00a Adult Sunday School 10:00a Worship Service 10:00a Sunday School 11:30a Soup & Sandwich 12:00p Soup Kitchen	2 7:00p Boy Scout Mtg (SH) 7:00p ACT Study Grp	3 Election Day 9:00a-12:00p Food Pantry 	4 9:30a Women's Bible Study 7:00p Choir Rehearsal	5 Ascension Day 	6 9:00a Men's Study Grp 	7 9:00a N.A. 7:00p A.A.	
8 Mother's Day 9:00a Early Social Hour 9:00a Adult Sunday School 10:00a Worship Service 10:00a Sunday School 11:30a Christian Ed Mtg 12:00p Soup Kitchen 6:30p High School Youth Group 	9 7:00p Boy Scout Mtg (SH) 7:00p ACT Study Grp	10 9:00a-12:00p Food Pantry	11 9:30a Women's Bible Study 7:00p Choir Rehearsal	12 9:30a Circle 3 Meeting	13 9:00a Men's Study Grp	14 9:00a N.A. 7:00p A.A.	
15 Pentecost Sunday Pentecost Offering 9:00a Early Social Hour 9:00a Adult Sunday School 10:00a Worship/Communion 10:00a Sunday School 11:15a Deacons Meeting (Lib) 12:00p Soup Kitchen 2:00p Freighter View Worship 	16 5:30p Trustee's Meeting 5:30p Session Mtg (WR) 7:00p Boy Scout Mtg (SH) 7:00p ACT Study Grp	17 9:00a-12:00p Food Pantry 9:30a Ladies Coffee Hour	18 9:30a Women's Bible Study 7:00p Choir Rehearsal	19	20 9:00a Men's Study Grp	21 Armed Forces Day 9:00a N.A. 7:00p A.A. 	
22 Trinity Sunday 9:00a Early Social Hour 9:00a Adult Sunday School 10:00a Worship Service 10:00a Sunday School 12:00p Soup Kitchen 6:30p High School Youth Group 	23 Victoria Day (CN) 7:00p Boy Scout Mtg (SH) 7:00p ACT Study Grp 	24 9:00a-12:00p Food Pantry	25 9:30a Women's Bible Study 7:00p Choir Rehearsal	26 6:30p Boy Scout Leader Mtg	27 9:00a Men's Study Grp	28 9:00a N.A. 7:00p A.A.	
29 Recognition Sunday 9:00a Early Social Hour 9:00a Adult Sunday School 10:00a Worship Service 10:00a Sunday School 11:30a Coffee & Cookies (SH) 12:00p Soup Kitchen 	30 Memorial Day Office Closed 7:00p Boy Scout Mtg (SH) 7:00p ACT Study Grp 	31 9:00a-12:00p Food Pantry					

**First United Presbyterian
Church**

555 Bingham Avenue
Sault Ste. Marie, MI 49783



Phone: 906-632-7771

Fax: 906-632-4666

E-mail: office@soopresbyterian.org

Web site: soopresbyterian.org

Office Hours: 8:00 a.m. to 2:30 p.m.

Monday through Friday

(closed 11:30-12)

Sunday Worship Schedule

Adult Sunday School 9:00 a.m.

Worship Service 10:00 a.m.

Sunday School (all grades) 10:00 a.m.

Church Staff

Rev. Mark Gabbard, Minister

Don Myers, CRE

Brenda Ransom, CRE

Kay Boyne, Music Director

Denise Goldade, Financial/Administrative Assistant

Jesse Witte, Sexton

Non-profit Organization

U.S. Postage Paid

Sault Ste. Marie, MI 49783

Permit No. 213

**Deadline for June issue:
May 18th**

**Happy
Mother's
Day!**



*"Honour ... thy
mother, as
the LORD
thy God
hath
commanded
thee"*

Deuteronomy 5:16

Celebrating
OUR GRADUATES
and our Sunday School Students



May 29th